

# FLAT METALS

[www.bredametals.com](http://www.bredametals.com)



## APPLICATIONS

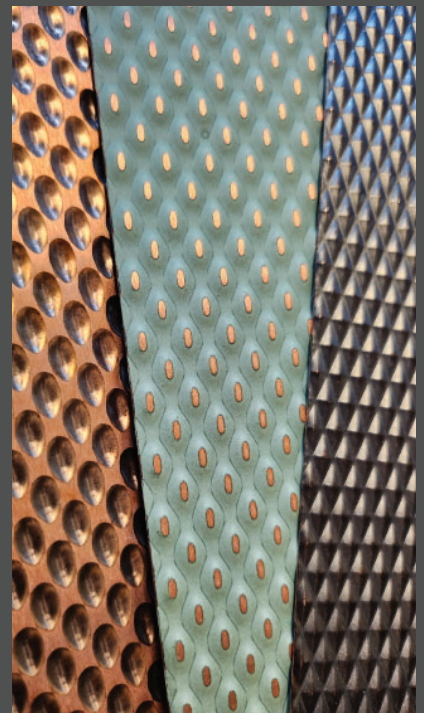
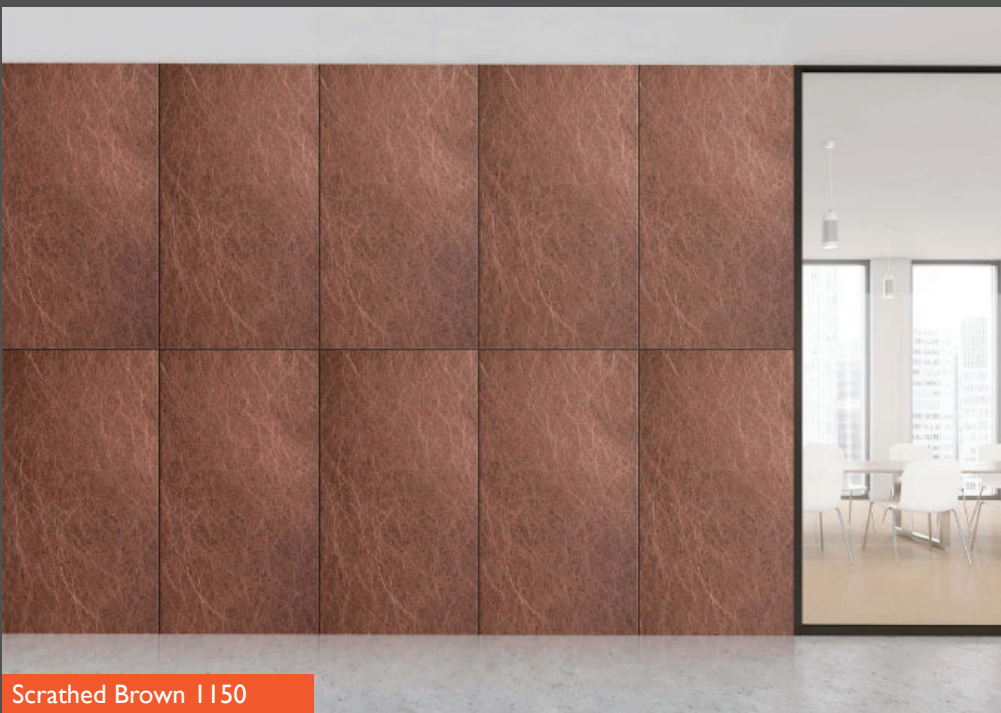
- Wall Panels
- Ceiling Panels
- Bar Fronts
- Partitions
- Curved Panels

## ENVIRONMENT

- Interior
- Exterior

## DIMENSIONS

Thickness: 0.7 - 1.5 mm  
Standard Width: 1000 mm  
Standard Length: 3000 mm  
Max Length: 6000 mm



Scratched Brown I150



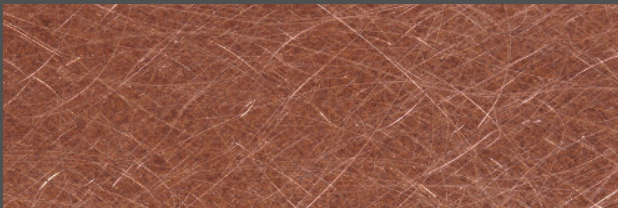
# FLAT METALS



**GOLD 5030**  
**B.NDB.101**



**GOLD 1120**  
**B.NDB.106**



**SCRATCHED BROWN 1150**  
**B.NDB.102**



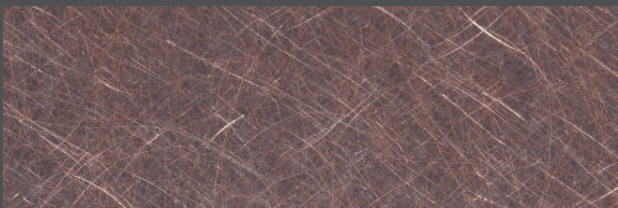
**BRASS WEATHERED 710**  
**B.NDB.107**



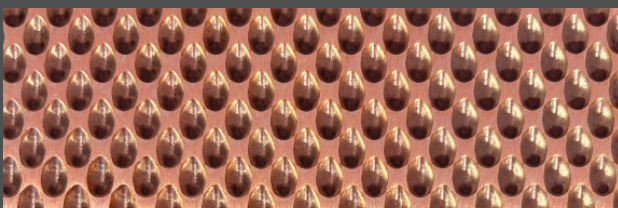
**BUBBLE GREEN 6030**  
**B.NDB.103**

#### Features & Measurements (in inches)

Thickness:	0.028 - 0.059 in (0.7 - 1.5 mm)
Standard Width:	39.4 in (1000 mm)
Standard Length:	118.1 in (3000 m)
Max Length:	236.2 in (6000 m)
Materials:	copper and brass
Surface Treatment:	grinding and pattern embossing



**SCRATCHED BROWN 990**  
**B.NDB.104**



**BUBBLE LIGHT BROWN 6010**  
**B.NDB.105**



These metals are natural copper and brass with a living finish that can change color over time.  
To preserve appearance, protective topcoats can be applied.  
Fingerprints can be removed with 100% acetone (nail polish remover).