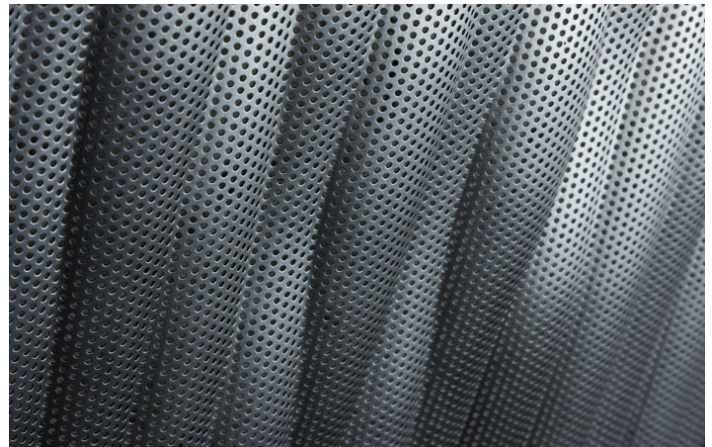


EMBOSSED METALS

FLOW XL



B.FTL.107



B.FTL.107-P

TECHNICAL DATA

Material: Steel / Stainless Steel
Aluminium*

Max. Width: 41.3 in (1050 mm)

Max. Length: 108.3 in (2750 mm)

Thickness: 0.031 - 0.079 in (0.8 - 2 mm)

FEATURES

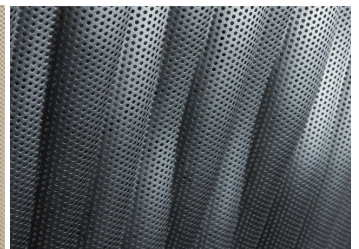
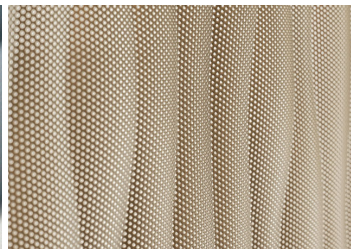
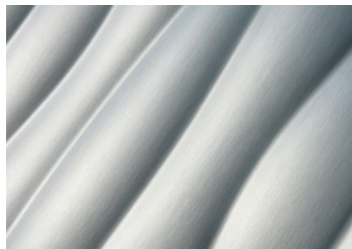
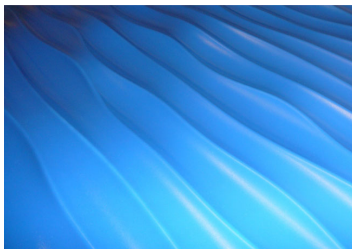
➤ Long sides can be folded at 26.38 in (670 mm)

➤ Perforated or non-perforated

APPLICATIONS

Wall elements, facades

POSSIBLE COLORS FINISHES:



*Bronze/Copper and brass available