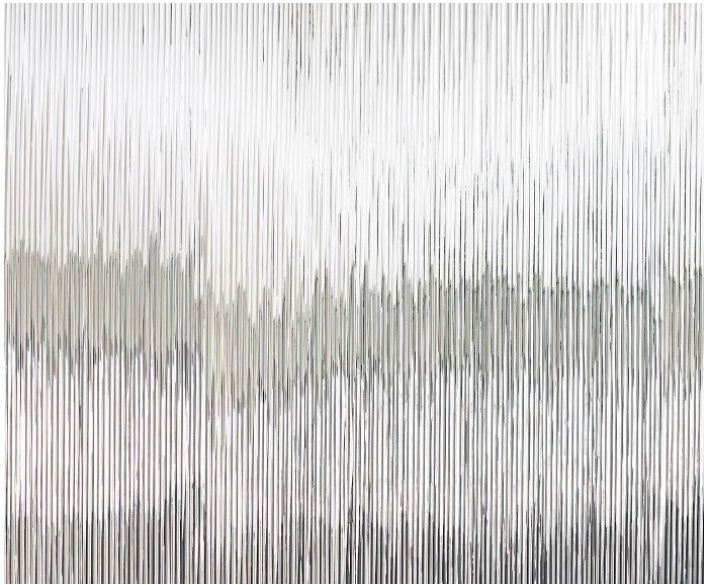
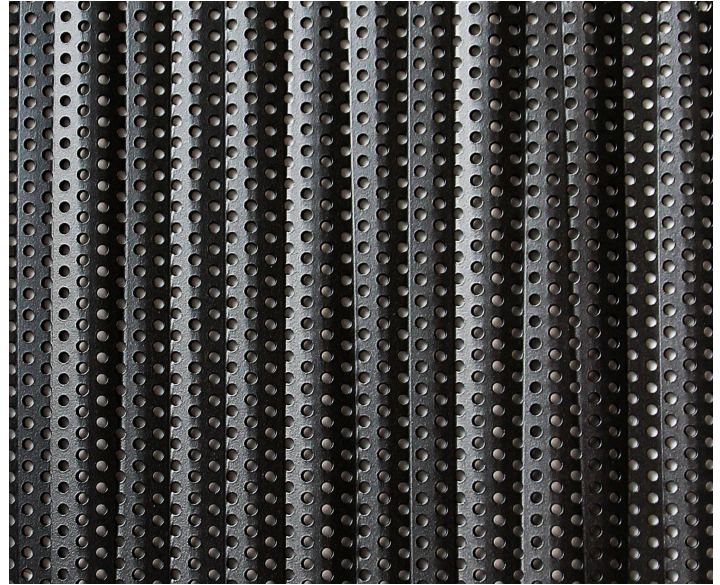


# EMBOSSED METALS FLOW



**B.FTL.103**



**B.FTL.103-P**

## TECHNICAL DATA

Material: Stainless Steel/Steel  
Aluminium  
Bronze/Copper

Max. Width: 76.8 in (1950 mm)

Max. Length: 155.5 in (3950 mm)

Thickness: 0.031 - 0.079 in (0.8 - 2.0 mm)

## FEATURES

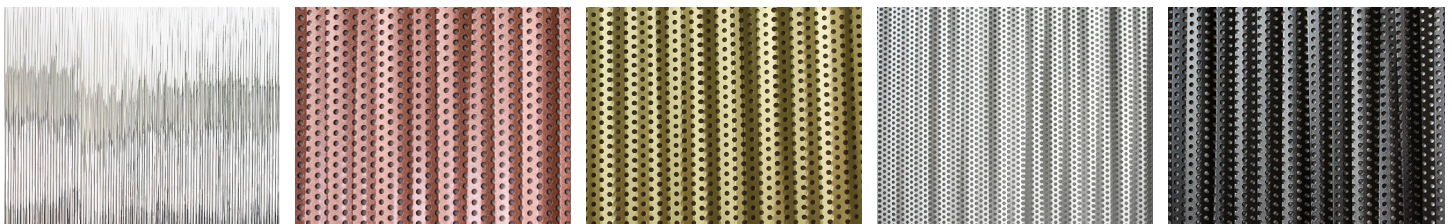
➤ Elements can be folded on all four sides

➤ Perforated or non-perforated

## APPLICATIONS

Wall elements, ceiling elements

## POSSIBLE COLORS FINISHES:



Additional customizable color finishes upon request