

TECHNICAL AND MAINTENANCE MANUAL FOR METAL FABRICS

UNPACKING AND HANDLING

The metal fabric you bought requires special attention. Here you will find all the instructions for handling and installation, in order to get the best result out of it:

1. Handle the fabric with a minimum of two people to avoid the formation of creases. Once the fabric wrinkles, it is not possible to bring it back to its original condition
2. Do not lean the roll against sharp corners.
3. Unravel the fabric on a large table. If a table is not available, clean the floor and unravel it on the floor.
4. Hang the fabric only after your desired hanging system is already in place on the ceiling or wall.

Breda Metals guarantees that all fabrics are packed properly, without defects. IBreda Metals does not accept complaints for incorrect handling or installation.

IMPORTANT NOTE ON DIMENSIONS

Due to the elastic nature of knitted fabrics, the dimensions of the opened roll or piece may not precisely match the measurements specified in your order. Should this occur, gently stretching the fabric will allow the material to recover and meet the specified ordered dimensions. In applications that require a precise length, it is suggested to pre-stretch the fabric so that when it is installed, it has the correct length. This is particularly recommended for curtains.

CUTTING

Our fabrics can be easily cut using standard scissors.

We suggest using protective gloves and protective glasses during cutting, as small residues of metal wire are formed and may be dangerous for eyes and skin.

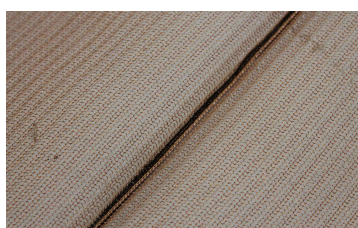


SEWING WITH OVERLOCK MACHINE

You can sew Breda Metals fabrics using a standard overlocking machine, with any number of thread formations and needles.

- Recommended needle size: 100
- Recommended sewing thread: tough polyester filament core, coated with spun polyester staple
- Recommended thread count: Ne 45, Nm 75/2

Instructions: Sew the metal fabric just like a standard fabric.



NOTE: Black thread has been used for visibility. For best results, use thread in the same color as the metal.

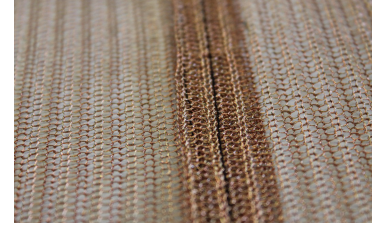
SEWING WITH SEWING MACHINE

- You can sew Breda Metal fabrics using a standard sewing machine.
- Recommended size of needle: 100
- Recommended type of sewing thread: tough polyester filament core, coated with spun polyester staple.

Recommended count of sewing thread: Ne 45, Nm 75/2

Instructions: sew the metal fabric just like a standard fabric.

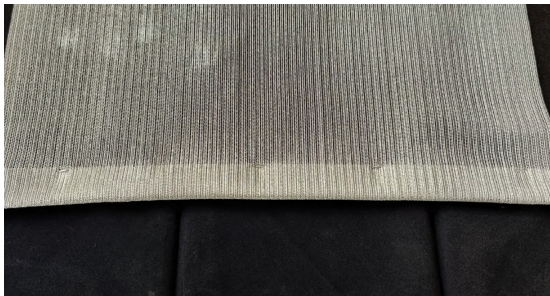
SEWING A DOUBLE HEM



NOTE: black thread has been used for visibility. For best results we suggest to use thread with the same color of metal.

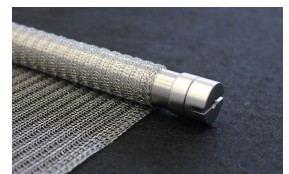
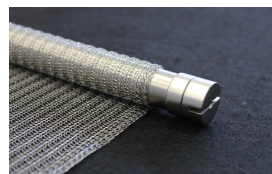
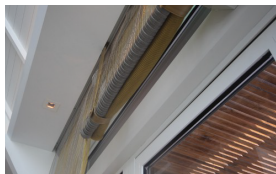
HEMS WITH STAPLES

One method to make clean hems is to use a stapler. Two-fold the hem and then staple the fabric as shown in the picture. This method is recommended when you want to avoid creating wrinkles by placing the fabric under the arm of a sewing machine.



CURTAINS

If you need to hang the fabric to create curtains or sheers, refer to the following examples. This last example has been done by gluing the fabric around the rod using transparent epoxy resin.



HOW TO GLUE THE FABRIC

Fabrics made of 100% AISI 304 or AISI 316L stainless steel

Before applying glue, degrease the edge of the fabric using nitro thinner. Wear protective gloves and glasses and work in a ventilated area.

1. FABRICS MADE OF 100% AISI 304 OR AISI 316L STAINLESS STEEL

Before applying the glue degrease the edge of fabric using nitro thinner, wearing protective gloves and glasses, in a ventilated area.

2. FABRICS CONTAINING BRASS AND COPPER

Before applying the glue degrease the edge of fabric using denaturated alcohol, wearing protective gloves and glasses, in a ventilated area.

3. Roll the fabric around the rod, apply the glue and let it dry for the requested time in a ventilated area. Wear protective mask as indicated according the MSDS of the glue.

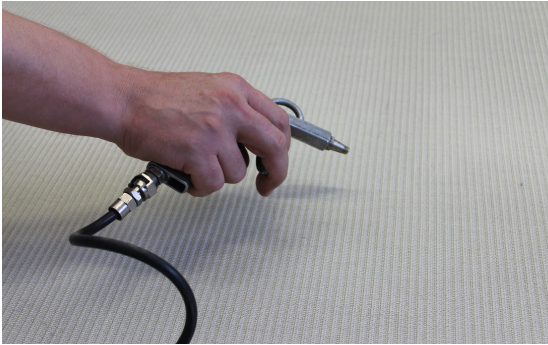
We suggest to use transparent, thick, epoxy glue, like UHU Evo Stick or equivalent.

MAINTAINANCE OF FABRICS MADE OF 100% STAINLESS STEEL

All fabrics made of 100% stainless steel, either 304 or 316L, can be cleaned with: vacuum cleaning, compressed air, steam, or power jet water cleaning.

MAINTAINANCE OF FABRICS CONTAINING COPPER AND BRASS

All fabrics containing brass or copper, must be cleaned with: vacuum cleaning or compressed air.



CREASES:

Due to the nature of wire we knit fabrics are subject to creases. Once formed, creases cannot be eliminated.

To eliminate the visibility of potential wrinkles on the textile, manually pre-creasing the fabric is advised. This process helps the material achieve an initial texture, whereby any further wrinkles that may occur will blend seamlessly. Upon request it is possible to supply certain styles of fabrics that do not crease in 100% brass.

For any other information on our products not contained in this manual please contact your technical Dept. at info@bredametals.com