

EMBOSSED METALS

www.bredametals.com



RIPPLE • B.FTL.101

APPLICATIONS

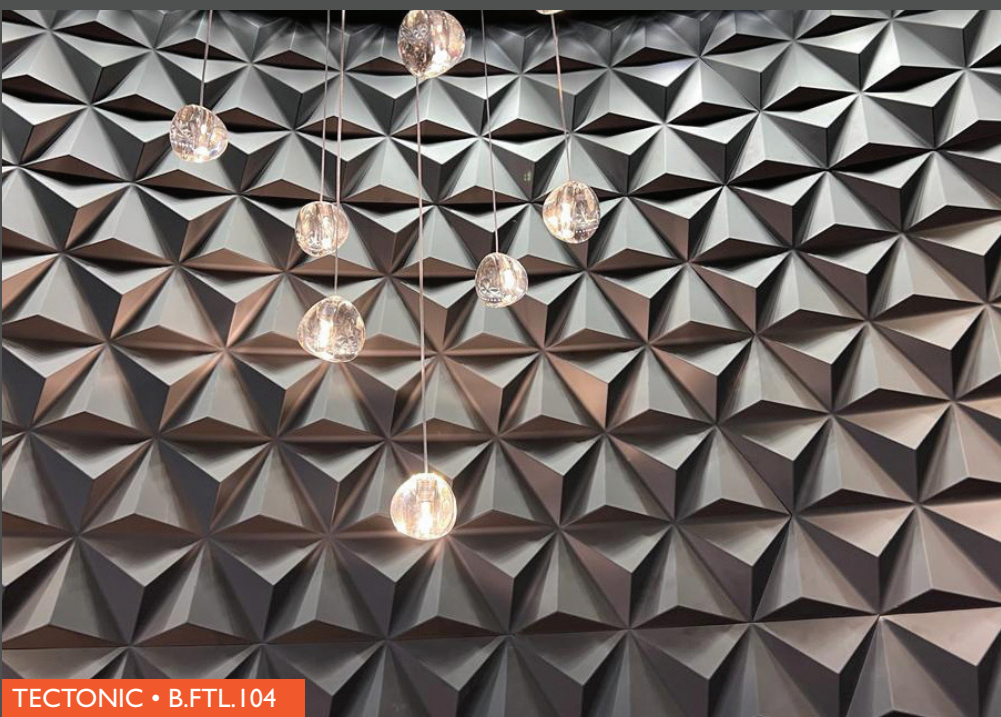
- Wall Panels
- Ceiling Panels
- Facades
- Partitions
- Furniture Faces

ENVIRONMENT

- Interior
- Exterior

MATERIAL

- Aluminum
- Perforated Aluminum
- Stainless Steel



TECTONIC • B.FTL.104



RIPPLE • B.FTL.101

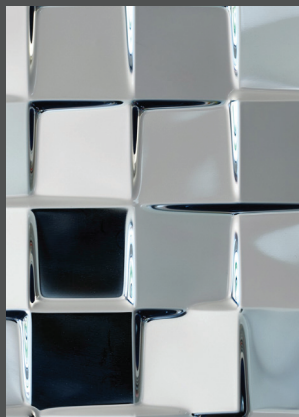
EMBOSSED METALS

www.bredametals.com



RIVER
B.FTL.101

Thickness: 0.8 - 2.0 mm Max
Width: 55"
Height: 118"



TERRACE
B.FTL.102

Thickness: 1.0 - 3.0 mm Max
Width: 55"
Height: 153"



FLOW
B.FTL.103

Thickness: 0.8 - 2.0 mm
Width: 76.75"
Height: 115.50"



TECTONIC
B.FTL.104

Thickness: 0.8 - 2.0 mm
Width: 55"
Height: 153"



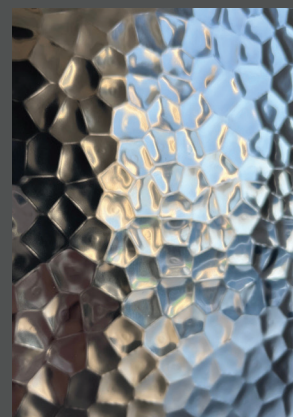
RIPPLE
B.FTL.105

Thickness: 0.8 - 2.0 mm Max
Width: 76.75"
Height: 143.75"



FLOW XL
B.FTL.107

Thickness: 0.8 - 2.0 mm Max
Width: 41.25"
Height: 108.25"



SURF
B.FTL.108

Thickness: 0.8 - 2.0 mm Max
Width: 63"
Height: 157"

Perforated options are available for all styles