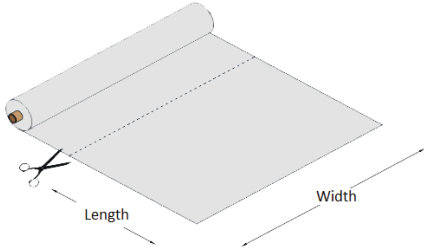


Product Specification / MetalDesign

5.TO CUT PANEL

Mesh is cut away always on the edge of the length to take out the selvage
Normally cut is on the length, on the wide only by specific request.
Tailored shape has to be agreed.



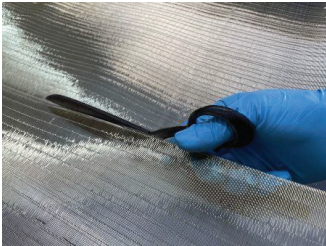
To cut and/or shaping mesh use tailor scissors (e.g. ABC by 10"):
Collection Soffici, Eleganti, Lineari, Cangianti.



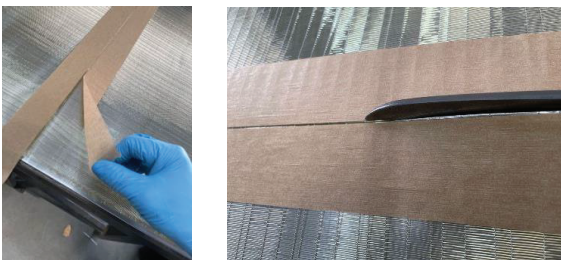
To cut and/or shaping mesh use handle shear with high speed
(es. Bosch GSCI 60):
Collection Armate, Geometriche.



Cut along the warp, parallel to warp strands.



To cut along the weft is preferred to place guides with paper tape to hold the wire.



Product Specification / MetalDesign

6. MANIPULATION

Do not handle the mesh with only one hand, do not push flat mesh on the table



Handle mesh by nitrile gloves one - use (ref. UNI EN 420)

Remove auras due to wrong handle by soft microfiber cloth.

Remove paper and/ or metal debris by brush or air compressed blow on a distance of 30 cm or silicon roller.



To develop roll use an unwinder stand close to control table.

Avoid surface low of mesh between stand and table.

