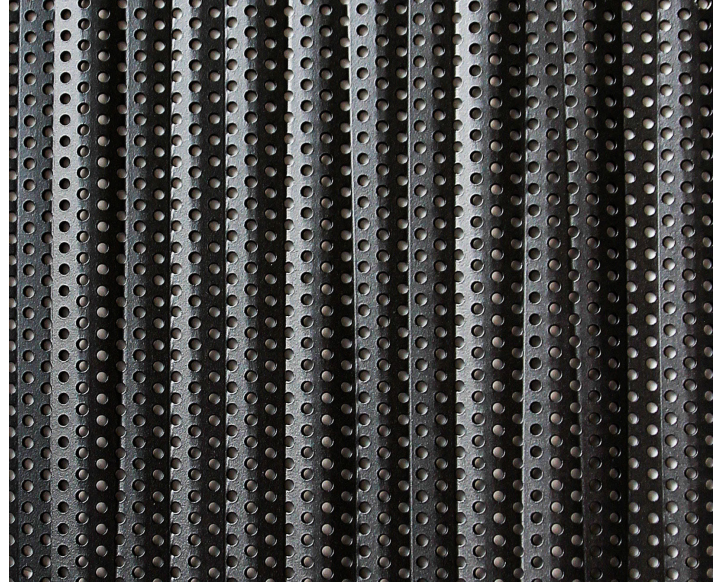


# EMBOSSED METALS FLOW



**B.FTL.103**



**B.FTL.103-P**

## TECHNICAL DATA

Material: Stainless Steel/ Steel  
Aluminium  
Bronze/ Copper  
Thickness: 0.8 mm - 2.0 mm

Max. Width: 1950 mm  
Max. Length: 3950 mm

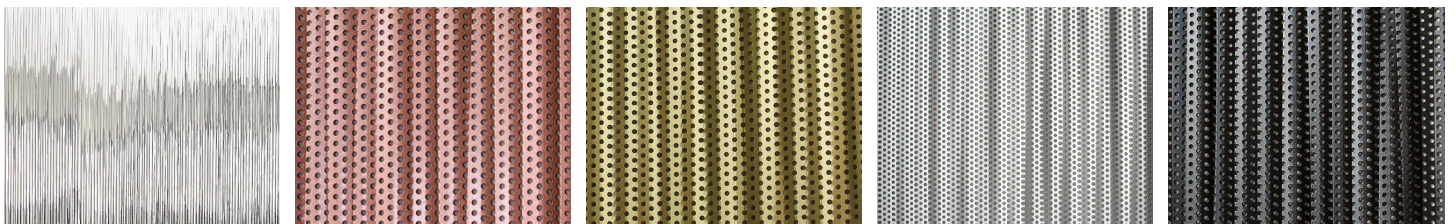
## FEATURES

- > Elements can be folded on all four sides
- > Perforated or non-perforated

## APPLICATIONS

Wall elements, ceiling elements

## POSSIBLE COLORS FINISHES:



Additional customizable color finishes upon request